

Series A; Selection

~10 Innovators who will Build a Bright Future Society~

Reborn Challenge
Implementation Body

The Osaka Chamber of
Commerce and Industry

Series A; Selection aims to exhibit innovative products and prototypes developed by innovative SMEs and startups primarily focused on B2C businesses. These exhibitions will cover fields such as Green Tech (GX), SDGs/ESG, XR (AR, VR, Metaverse, Digital Twin) and Lifestyle. Visitors will have the opportunity to see, touch, and enjoy these cutting-edge innovations.

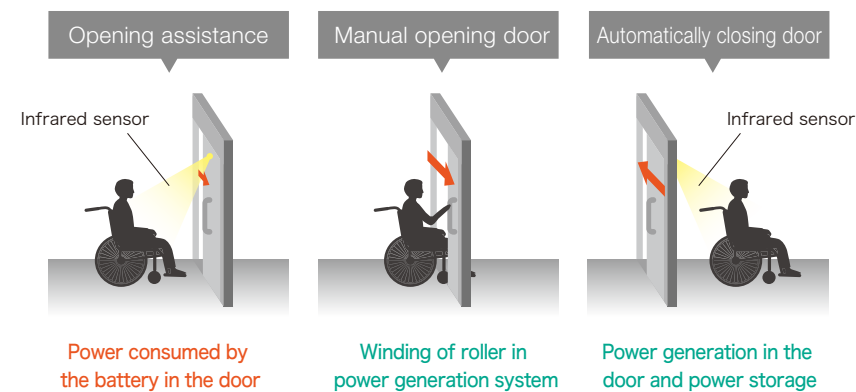
Special Website



[Contact]

Contact Window: Industry and Technology Promotion Staff, Industry Division
TEL : 06 - 6944 - 6300 E-mail : sangyo@osaka.cci.or.jp

Converting the energy generated in daily life into electricity

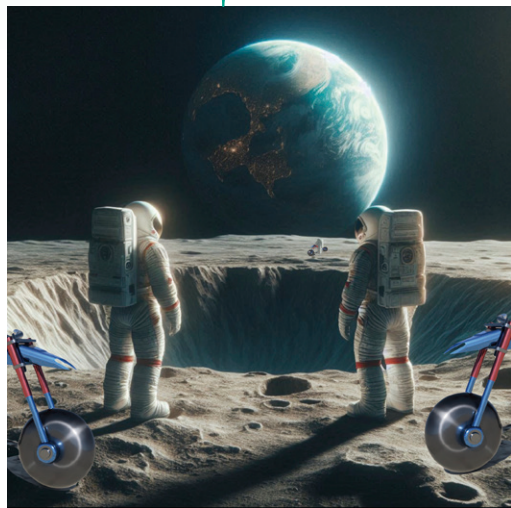


UNION DOOR TECH Co.,Ltd.

A spring roller is wound when a sliding door is opened and then released when the door is closed under its own weight. At that time, the power is multiplied several times by a speed increasing gear to generate and store electricity. We are developing mechanisms to utilize that power in daily life as circular energy. A great variety of uses can be expected in future society, including as action for an aging society, and to provide emergency power in the event of a natural disaster. In the exhibition, visitors will be able to experience the "daily life power generation system" which generates electricity from an actual door.

The arrival of a new space age!

A future of riding electric bikes on the Moon



RIDE DESIGN

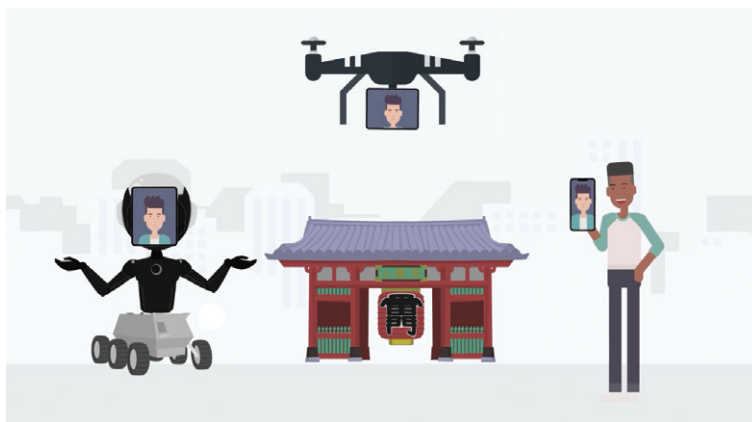
We are currently utilizing the experience we have accumulated in product design for areas such as electric mobility to work on a project to produce an electric motorcycle to explore the surface of the Moon. We are working on various aspects to thoroughly pursue the practicability of this, including with a vehicle design that can cope with the harsh terrain of the lunar surface, a shape that will be easy for astronauts to operate, and weight reduction to reduce the cost of launching it in a rocket. It can also be expected that it will be used on Earth in situations such as disaster rescues. In the exhibition, we will introduce an electric motorcycle for the age of space exploration that provides safety, functional beauty and a fun ride.

The people and technology of small-scale city factories will create the future!



OSAKA LOCAL FACTORY EXPO

The manufacturing technology of Osaka is closely linked to people's lives and supports those lives with its advanced technological capabilities and safety, including in areas such as the space industry, transportation infrastructure, social infrastructure, famous buildings, and communications infrastructure. In the exhibition, we will use VR in a dome-shaped space to express the high-level processes of this manufacturing and its style of work, which emphasizes DEI (diversity). We will use a 3D projector to enable visitors to experience the manufacturing workplaces that are not normally visible, and will create a sense of realism.



Log in to another world with the avatar service "GENCHI"

toraru Co.,Ltd.

GENCHI is a service in which a robot or a person with a smartphone acts on your behalf as your alter ego. The vision, hearing and touch are shared using patented technology that further develops the telepresence technology used on robots. The service allows the users to experience a sense of realism as if they are actually there. At the venue, we will connect in real time with locations such as Tsutenkaku in Osaka, Asakusa in Tokyo and overseas destinations such as India, and it will be possible for visitors to use "GENCHI" to walk around those areas and talk with the local people.

Your own dedicated health navigator will make your daily life enjoyable

RealWorldGames K.K.

Using the 3D map engine "TERRA" that we developed in-house, a navigator provides comment on various topics such as "healthy exercise," "stress-free commuting time," and "advice on date plans" based on information on the user such as location information and lifestyle rhythm information. At the venue, we will exhibit the "Leave it up to me! Life health navigation" that uses this system. Be sure to experience it at the venue to see how your own dedicated health navigator could improve your life each day.



Creating new value for locally produced vegetables! Aiming for a society with no food loss



ASP Co., Ltd.

We will introduce the "Local Healthy Food" that is made by upcycling vegetables and other agricultural and fishery products into foods that promote health. The foods are processed to improve their shelf life, such as by turning them into powder and by fermenting them, and then upcycled into foods for purposes such as improving the intestinal environment, preventing diabetes, and measures against heatstroke. In the exhibition, we will also introduce our efforts for a platform to co-create new markets that will create future food, as we aim to realize a society where the regional foods of Japan are passed down as an important part of the food culture while using up the food completely so that there is no need for phrases such as substandard product or food waste.

The Metaverse: Empowering Seniors for Better Health

Techlico Inc.

We will exhibit "Rehamaru Go", a metaverse service for seniors that utilizes Mixed Reality (MR) technology. The service offers features such as access to medical services online, a program that simultaneously trains both cognitive and physical functions, and a point-based system that makes rehabilitation enjoyable. In addition, communication features within the metaverse allow users to deepen their connections with family and friends.



A brilliantly colorful and sustainable future realized through consideration for the environment and surface treatment

TSUDA Industrial Co.,Ltd.

One problem with petroleum-derived plastics and paints is that they do not decompose naturally and have a major impact on the global environment. In response to this, we are developing biomass paints derived from plants and technologies to decorate rubber and glass, which have been difficult to process until now. In the exhibition, visitors will see the colorful manufacturing created by environmentally conscious materials and decorative techniques such as the vacuum deposition of a metal coating on a surface, and painting that enables the desired color scheme.

Hokusai's masterpiece comes to life! A fusion of art and technology

UTSUBO Co.,Ltd.

Hokusai's iconic The Great Wave artwork is reimagined at the Expo as an interactive digital experience. Brought to life with immersive 3D visuals and body-tracking technology, the wave shifts and transforms in real time, responding to your every move. This installation bridges the physical and digital worlds, offering visitors a unique, modern encounter with one of Japan's most celebrated artworks.

